




**About**

- Made from a blend of responsible materials.
- Breathable and hard-wearing fabric.
- No label: 100% customisable for your project.

60% TENCEL™\* Lyocell and 40% organic cotton \* TENCEL™ is a trademark of Lenzing AG Slightly flared loose cut Enzyme-washed product Garment washed after assembly: colours may vary slightly Tone-on-tone recycled plastic buttons Long sleeves with two pleats Panel on back Two back pleats Buttoned cuffs with slits

 125 g/m<sup>2</sup> 

**Sizes**



 XS - S - M - L - XL

**More information**

**Logistic**

**Country of origin**

**Customs code**

 1  25  BD - Bangladesh  62064000

**Washing instructions**



**Colours**

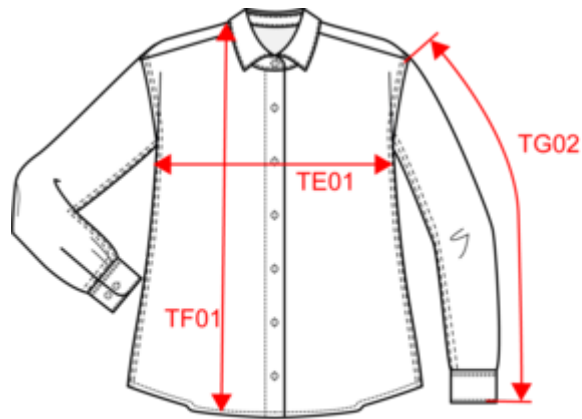
 Washed Dark Navy  
 Washed Organic Khaki  
 Washed white

**Certifications**



**NS515**  
Ladies' shirt with Lyocell TENCEL™

Dimensions (cm)




Measurements in cm	XS	S	M	L	XL
TE01 - 1/2 chest width at 1.5cm below armhole	50.50	53.50	56.50	59.50	62.50
TF01 - Total height from HSP	68.00	70.00	72.00	74.00	76.00
TG02 - Long sleeve length	51.00	52.00	53.00	54.00	55.00

# NS515

## Ladies' shirt with Lyocell TENCEL™

### Colours information

 **Washed Dark Navy**  
 RVB : 39,40,49  
 Pantone C : 426C  
 Pantone TCX : 19-4011TCX

 **Washed Organic Khaki**  
 RVB : 85,89,77  
 Pantone C : 418C  
 Pantone TCX : 19-0312TCX

 **Washed white**  
 RVB : 240,238,248  
 Pantone C : Cool Gray 1C  
 Pantone TCX : 13-4105TCX

### Logistic



1



25

Sizes	Width (cm)	Height (cm)	Length (cm)	Net weight (kg)	Gross weight (kg)	Pieces/Box	Pieces/Bundle
XS	40.00	19.00	60.00	7.10000	8.50000	25	0
S	40.00	19.00	60.00	7.10000	8.50000	25	0
M	40.00	19.00	60.00	7.10000	8.50000	25	0
L	40.00	19.00	60.00	7.10000	8.50000	25	0
XL	40.00	19.00	60.00	7.10000	8.50000	25	0