




About

- Made from linen, a lightweight and breathable material.
- No label: 100% customisable for your brand.
- Fashionable dropped sleeves.

100 % linen. Straight fit with dropped sleeves. Side slits with swallowtail finish. Collar with collar stand and V-shaped buttonless polo shirt placket in main material. Double over stitching on cuffs and bottom hem. Half-circle in the back.

 190 g/m² 

Sizes

 XS - S - M - L

More information

Logistic

 10

 50

Country of origin



BD - Bangladesh

Customs code



61069050

Colours

 Ivory
  Light Olive Green
  Navy Blue
  Stone Grey
  Wet Sand

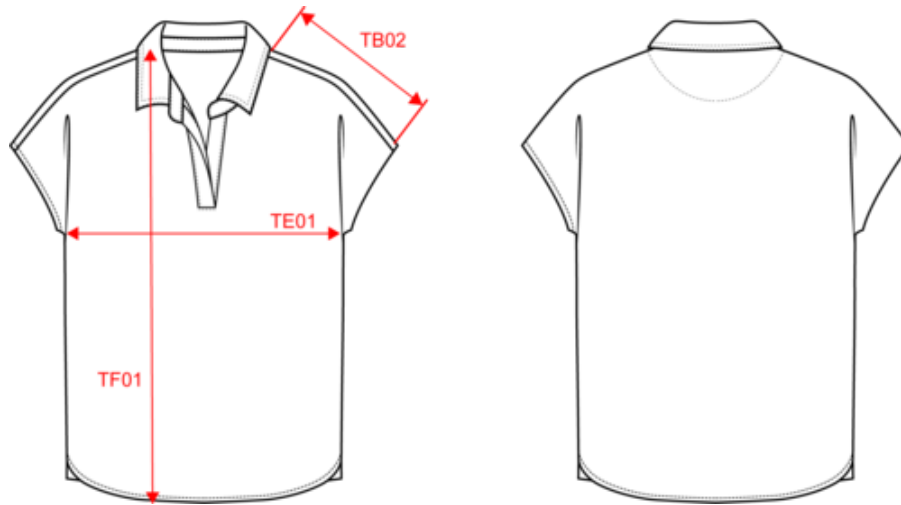
Certifications



CO 100717
IFTH
www.oeko-tex.com

NS221
Ladies' linen polo shirt

Dimensions (cm)



Measurements in cm	XS	S	M	L
TB02 - Shoulder length	25.50	25.50	26.50	27.50
TE01 - 1/2 chest width at 1.5cm below armhole	48.50	48.50	51.50	54.50
TF01 - Total height from HSP	65.00	65.00	67.00	69.00

Colours information



Ivory
RVB : 236,231,218
Pantone C : 7534C
Pantone TCX : 11-0701TCX



Light Olive Green
RVB : 120,112,89
Pantone C : 7497C
Pantone TCX : 17-0517TCX



Navy Blue
RVB : 41,45,57
Pantone C : 433C
Pantone TCX : 19-4010TCX



Stone Grey
RVB : 77,70,68
Pantone C : Black 7C
Pantone TCX : 19-0405TCX



Wet Sand
RVB : 164,146,128
Pantone C : 7536C
Pantone TCX : 17-1312TCX

Logistic



10



50

Sizes	Width (cm)	Height (cm)	Length (cm)	Net weight (kg)	Gross weight (kg)	Pieces/Box	Pieces/Bundle
XS	40.00000	20.00000	60.00000	7.75000	9.05000	50	10
S	40.00000	20.00000	60.00000	8.25000	9.55000	50	10
M	40.00000	20.00000	60.00000	8.75000	10.05000	50	10
L	40.00000	20.00000	60.00000	9.25000	10.55000	50	10